

VIGIA
VIGIA
August'16

NEWSLETTER


museudabaleia
CANIÇAL | MADEIRA

museology

Object of the month: Sculpture of a whaling scene.

history

Instalation of the EBAM facility in Caniçal.

science

Madeira Island Stranding Network (RACAM)

education

To educate – The importance of reflection.

museology

OBJECT OF THE MONTH



Sculpture of a whaling scene in Ponta de São Lourenço, Caniçal . It refers to the first years of whaling as it shows a whaleboat with a sail, the first to be used in this activity.

Producing artistic and ornamental pieces made from bones and whale teeth were common practice among some whalers, increasing this way their monthly income . Other craftsmen , although not directly linked to the whaling activity, also dedicated themselves to the production of artistic pieces , taking advantage of the bones abundance, such as the author of this piece.

Denomination

Sculpture of a whaling scene

Artisan

João Sousa

Material

Jaw bone and a wooden base

Inventory Number

MBM004

Date

06-09-1990

Location

Madeira Whale Museum

[Back to the begining ↑](#)

history

The instalation of the EBAM facilities in Caniçal

Whaling in Madeira is an extinct activity, nevertheless, references and images related to this activity are likely to arouse conflicting emotions.



EBAM facilities, at Caniçal

However, this recent history should not be denied but preserved instead, because it was the reality in this archipelago, was part of everyday life for many families and part of the identity construction of a population who saw whaling as an opportunity to improve living conditions that they were subject.

However, history of whaling in Madeira (1941-1981) should not be mentioned without the appropriate socioeconomic context.

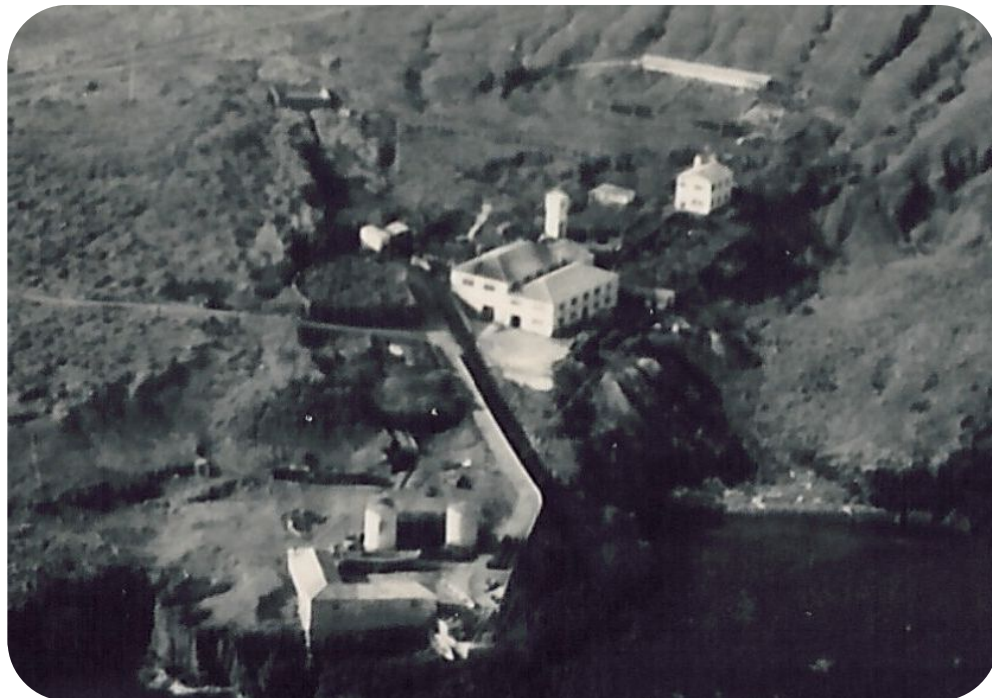
In 1940, Caniçal's population was of 996 habitants who lived almost exclusively from fishing, because the aridity of the land did not allow major crops. The biggest source of income was derived from the sea. If bad, sea state conditions were synonymous of hunger and misery for the Caniçal's population, Madeira's most eastern town, whose connection to the neighboring parish was done by sea or through walks between the rocks.

history

The instalation of the EBAM facilities in Caniçal

Whaling in Madeira didn't start in Caniçal, but the isolation that characterized this town associated with favorable sea conditions for most of the year, as well as the strategic location of islands where this activity has developed, made Caniçal the ideal location for the installation of the whale processing factory, which happened in 1949.

Despite some drawbacks, the installation of the factory in Caniçal was an asset to the population of the Madeira archipelago, especially from Caniçal.



Aerial view of the EBAM's facilities

Whalers faced dangers, defied nature and overcome fears to face the sea giants, but that way they supported their families for years and watch an improvement in their living conditions, which also represented a starting point for the development of Caniçal parish.

The Madeira Island Stranding Network (RACAM)

The Madeira Island Cetacean Stranding Network (RACAM) aims to: promote the adequate handling of, alive or dead, stranded cetaceans; minimize any risks related with strandings to public health and safety; use the stranded animals as a source of scientific information and to contribute to the conservation of cetaceans and the marine environment in the Madeira archipelago.



Atlantic Spotted dolphin calf (*Stenella frontalis*)

In this endeavour RACAM is called into action, as was the case in July 23rd, to collect an Atlantic Spotted dolphin (*Stenella frontalis*) calf, that had been found dead at sea a few miles South of Funchal. The cause of death remains undetermined.

The Madeira Island Stranding Network (RACAM)

On July 28th, a team was mobilized to examine and retrieve, with the help of 2 rangers from the Forests and Nature Conservation Institute, a dead Cuvier's Beaked Whale (*Ziphius cavirostris*) that had stranded at Ponta de São Lourenço. The onsite exam revealed it to be a female, but even though no cause of death has been established, the team believes it to be related to the recent pregnancy shown by the animal.



Dead Cuvier's Beaked Whale (*Ziphius cavirostris*)

In both cases samples were collected for the reference collections of the Madeira Whale Museum.

education

Teaching – the importance of reflection

When the museum presented the educative program, in September of 2015, for the 2015/2016 school year, assuming the responsibility of achieving and support the educative community in the development of their projects.

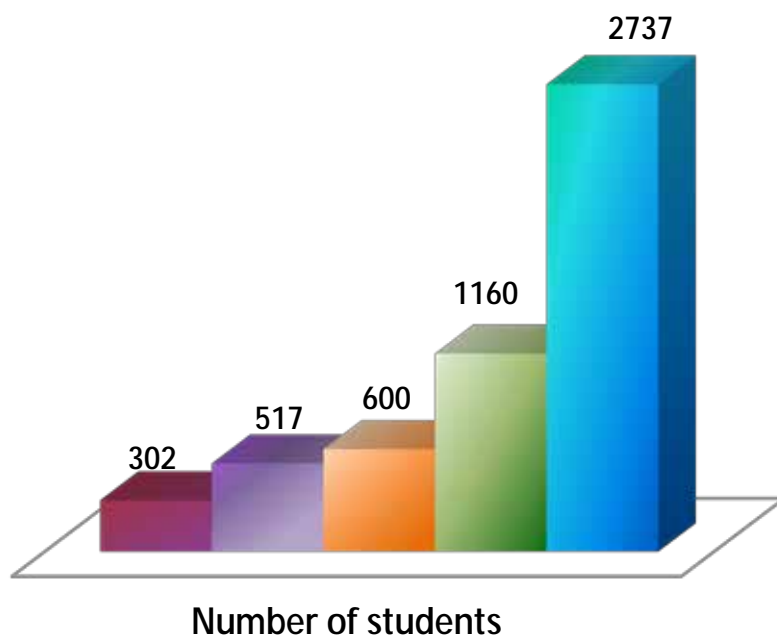
With the end of the school year, it's time to make a review of the activities that we developed and think about the best way to continue to support schools and their multiple aspects.

Although the numbers are not indicators of the student's learning quality, they enable the measurement of the interest showed by the educative community in the proposed activities.

This way, during the school year, the Madeira Whale Museum educative services organized activities with 5316 students distributed in the following activities:



Painting of a mural in Machico's marina



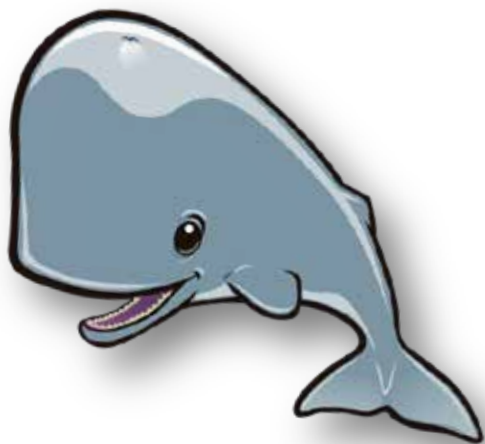
- Partnership with local schools
- ATL
- Story Hour
- Study Visits
- Enviromental awareness activities

Teaching – the importance of reflection

Also participated 674 teachers, accompanying students or in formative initiatives developed by the Museum. Also note that in some indicated activities, more than the accounting of the participants, we gave more importance to the pedagogical continuity of the projects developed in an understanding of a lifelong and collective learning.

This numbers shows the interest had in the activities by the educative community, inspiring us to do better and more. So we hope to achieve!

The MBM thanks all the institutions and people that collaborated with us in the 2015/2016 school year.



Teacher accompanying students, within the ambit of the project CARDUMO